

Making an Easter egg

Proportions: 3-4-5

Diameter of egg: 3 parts

Length: 4 parts

Overall length of wood: 5 (or more) parts

(includes support and, if desired, ring stand)

Steps of layout (fig. 1)

Turn to a spindle.

Measure diameter (D); calculate length (L). Begin Cuts 1 and 2 for L.

Make mark 1/10th of L from "pointy end"; cut down at *right* of mark to a diameter of 1/2 D (Cut 3). (Important cut.)

Mark center of wood between Cut 2 and left edge of Cut 3.

Turning (fig.2)

Slice away surplus at right of Cut 3, leaving support for tailstock.

Alternate refining curves from center to Cut 3 and from Cut 3 to right.

Left half of egg is a half-sphere. Refine shape as in previous step.

(Leave room enough to work, retaining support for finishing.)

Part off at right, "pointy" end.

For final refinement: A skew chisel is fine (if you like it). A "60-grit gouge" works, too. Sand as necessary. Apply first sealer finish.

Part off.

Figure 1

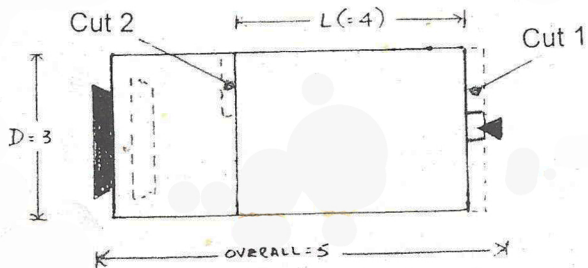


Figure 2

